

## Solamagic benefits at a glance:

**Attractive:** Architecturally designed to look good indoors and outdoors.

**Efficient:** Keeps people warm rather than heating the air. Wind sensitivity is low.

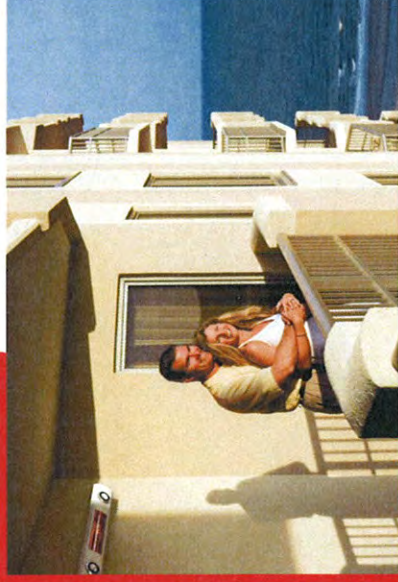
**Fast:** No heat up phase, effective heat immediately available when switched on.

**Economical:** 92% of electrical energy converted to heat. Running costs as low as 20 cents per hr.

**Clean:** No direct CO<sub>2</sub> emissions.

**Safe:** Splash water protected and No UV emissions.

**Durable:** Phillips HeLen bulbs provide 5000 hours of continuous use. Solid powder coated aluminum and stainless steel construction.



Heat any outdoor area, efficiently and economically

Like something different?  
Why not customise your  
Solamagic heater?



Ask us how.



**SOLAMAGIC**  
AUSTRALIA PTY. LIMITED

1 Comserve Close  
West Gosford NSW 2250

Phone: 1300 SOLAMAGIC  
Fax: +61 2 4323 1951  
E-mail: [info@solamagic-australia.com.au](mailto:info@solamagic-australia.com.au)

**SOLAMAGIC**  
AUSTRALIA PTY. LIMITED

*Light that warms you*

**Solamagic  
Infra Red  
Heating  
Technology**



**Ph 1300 SOLAMAGIC**  
[info@solamagic-australia.com.au](mailto:info@solamagic-australia.com.au)



## SOLAMAGIC Products

Solamagic supplies heat and improves quality of life in many outdoor and indoor areas. Our aim is perfect harmony between heat and light through our highly efficient future orientated, infrared heating technology.

From our 1400W compact heater to the 2800W heating- light combination unit, our products are tailored to meet your outdoor living needs



The 1400W compact heater, perfect for your patio.



1400 Watt Compact, .

Heat area up to 12m2 IP24 240V.

Wall or ceiling mounted. 2.0kg,  
450x145x160.



2800 Watt Combo Heater .

Heat area up to 20m2

IP24 240V.

Wall or ceiling mounted.

6-12kg,

H x W 145x160.

Lengths 2000, 2500 &  
3000mm

20W spot lights 2-4



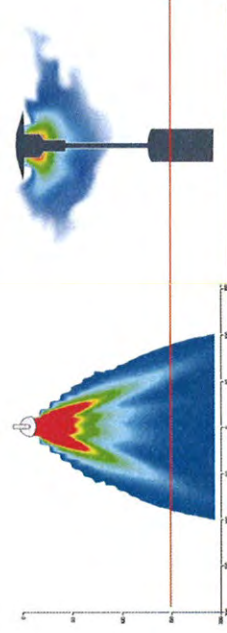
The 2800W Heat Light Combo heater, provides the ideal balanced atmosphere.



Alfresco dining and recreational areas ,under umbrellas, canvas, folding arm and, hard or soft cover awnings , Solamagic heaters are well covered.

## Solamagic- Heat that reaches you.

This comparison of systems clearly shows the highly efficient and environmentally friendly way in which our infrared heating systems work, especially outdoors.



Thermal image showing temperature profile from a Solamagic Heater compared to the image from a common gas patio heater. You can see your heat and dollars drifting away.

## What is Infra Red Heating

Infrared radiation is a natural form of radiation which accounts for nearly 50% of the total radiation spectrum of the sun. When Infrared radiation comes into contact with our skin it triggers a pleasant warming sensation. This is why it is affectionately known as 'heat radiation' Without the daily dose of infrared radiation from the sun there would be no life on Earth.



# Solamagic 1400 Compact

Solamagic Australia Pty Ltd  
1 Comserve Close  
West Gosford  
NSW 2250  
1300 SOLAMAGIC  
[info@solamagic-australia.com.au](mailto:info@solamagic-australia.com.au)

**Infra Red Heating Technology**  
**Efficient, Effective & Safe**



**Applications:** Patios, alfresco dining, balconies, work areas  
**Capacity:** 1400 Watt  
**Installation:** Wall, Ceiling, Tripod  
**Power:** 240V, IP24  
**Heatable area:** Up to 12m<sup>2</sup>  
**Heating:** Phillips HeLeN 5000hr  
**Weight:** 2.5kg  
**L x W x H:** 440 x 144 x 152mm  
**Colour:** White, or Custom



**Efficiency:** 92%, immediate heating  
**Operating cost:** ~\$0.21 per hour  
**CO2 emission:** No direct emission  
**Wind sensitivity:** Low

**SOLAMAGIC**  
AUSTRALIA PTY. LIMITED



# Solamagic 2800 Heat Light Combination

Solamagic Australia Pty Ltd  
1 Comserve Close  
West Gosford  
NSW 2250  
1300 SOLAMAGIC  
info@solamagic-australia..com.au

**Infra Red Heating Technology**  
**Efficient, Effective & Safe**



Applications:	Patios, alfresco dining
Capacity:	2 x 1400 Watt
Installation:	Wall, Ceiling
Power:	240V per, IP24
Heatable area:	depending on length up to 20m <sup>2</sup>
Heating:	Phillips HeLeN 5000hr
Lighting:	2-5 20W
Weight:	6-13.5 kg
Length:	1500, 2000, 2500, 3000mm
W x H:	145 x160mm
Colour:	White, or Custom
Efficiency:	92%, immediate heating
Operating cost:	~\$0.42 per hour
CO2 emission:	No direct emission
Wind sensitivity:	Low



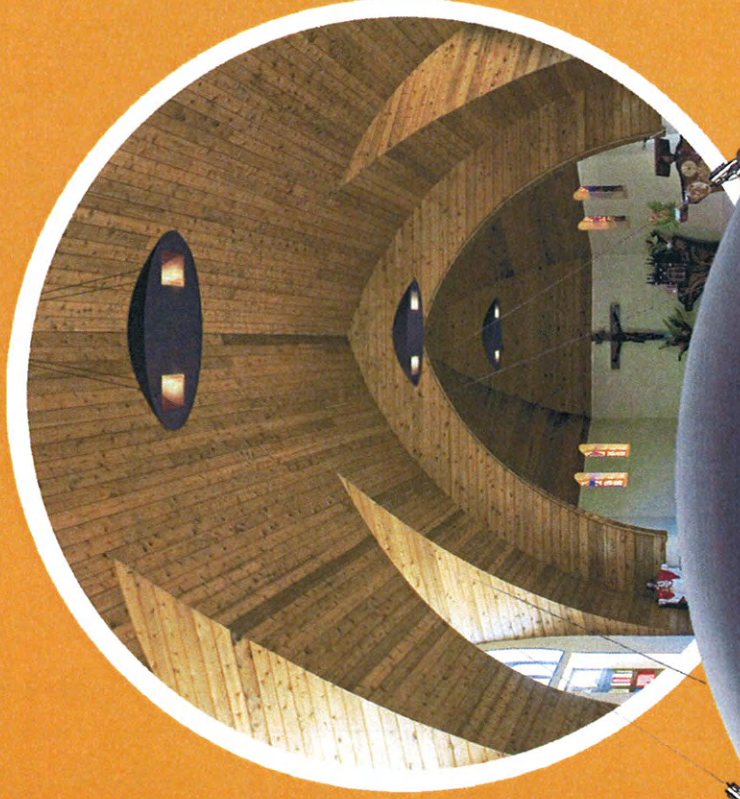
**SOLAMAGIC**  
AUSTRALIA PTY. LIMITED



# Solamagic 2800 Sundowner

Solamagic Australia Pty Ltd  
1 Conserve Close  
West Gosford  
NSW 2250  
1300 SOLAMAGIC  
info@solamagic-australia.com.au

**Infra Red Heating Technology**  
**Efficient, Effective & Safe**



**Applications:** Halls, Cafes, Hotels,  
& large open areas

**Capacity:** 2800 Watt

**Installation:** Suspended Ceiling

**Power:** 240V, IP34

**Heatable area:** 20m<sup>2</sup>

**Heating:** HeLeN 5000hr

**Weight:** 11.5kg

**L x W x H:** Dia 800mm x 542mm

**Colour:** Black, or Custom



**Efficiency:** 92%, immediate heating

**Operating cost:** ~\$0.45 per hour

**CO2 emission:** No direct emission

**Wind sensitivity:** Low



**SOLAMAGIC**  
AUSTRALIA PTY. LIMITED





Warm up guests,  
not the environment!

**SOLAMAGIC**  
AUSTRALIA PTY. LIMITED





## Give Solamagic patio heating the green light!

Solamagic heaters utilise Philips Infrared technology allowing you to perfectly control the climate on your patio or terrace, without ruining the climate on our planet. With our Australian climate and our desire to be outdoors, patio and terrace heaters are becoming increasingly popular. Some of them, however, raise serious concerns about the environment. With direct CO<sub>2</sub> and NO<sub>x</sub> emission, they can have a severe negative impact on our planet.

Solamagic heaters using Infrared technology offer the perfect solution. This extremely efficient heating method produces no direct CO<sub>2</sub> or NO<sub>x</sub> emission and only warms up people, not the air. Dimmable heat levels allow you to adjust the heater perfectly to all weather circumstances. As a result you can offer your clients a warm and inviting patio, or terrace, without harming the planet.

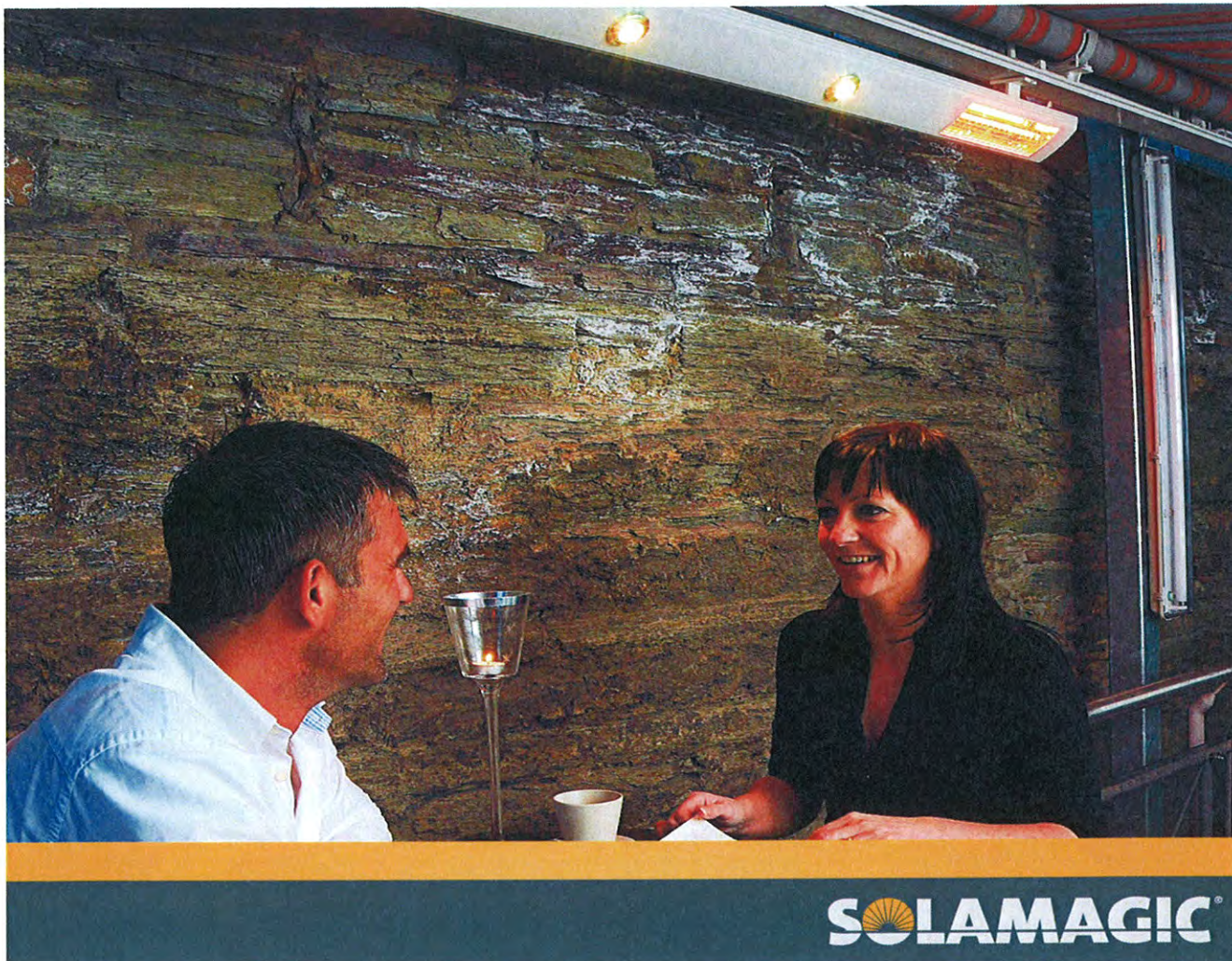


### Solamagic patio and terrace heaters with Philips Infrared lamps:

- Immediate warmth after switching on
- Infrared technology that heats people not air
- Presence detector option
- Dimmable heat level option
- No heat loss caused by draught
- No direct CO<sub>2</sub> and NO<sub>x</sub> emission
- Green energy compatible







## Save money as well!

Solamagic heaters with Philips Infrared lamps is up to 50% more energy efficient compared to other technologies! Indeed 85 to 92% of electricity used is converted into heat. Presence detectors ensure the heaters only work when they have to, reducing energy consumption even further. In other words, Solamagic patio and terrace heaters with Philips Infrared lamps not only contribute to a better environment; they can reduce your energy costs considerably as well.

Want to save the planet and money while you and your guests enjoy the most comfortable patio terrace? Start using Solamagic patio heaters with Philips Infrared lamps today!

For more information on outdoor patio heaters with Philips Infrared lamps, visit [www.solamagic-australia.com.au](http://www.solamagic-australia.com.au)





**Contact us;**

Solamagic Australia Pty Limited  
1 Conserve Close  
West Gosford  
NSW 2250

Phone 1300 SOLAMAGIC  
1300 765 262

Fax 02 4323 1951

Email [info@solamagic-australia.com.au](mailto:info@solamagic-australia.com.au)

Web [www.solamagic-australia.com.au](http://www.solamagic-australia.com.au)

For more information on Solamagic outdoor patio heaters with Philips Infrared lamps, visit  
[www.solamagic-australia.com.au](http://www.solamagic-australia.com.au)



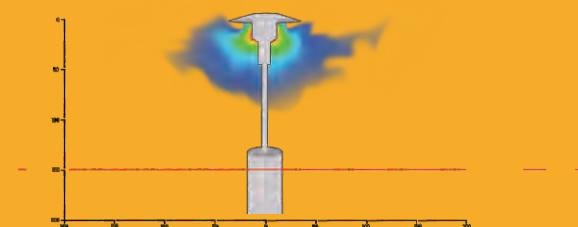
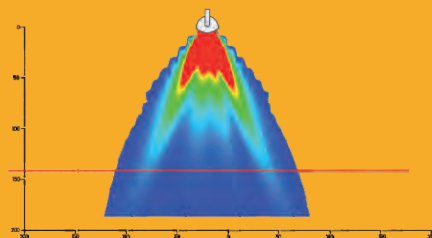
**SOLAMAGIC**  
AUSTRALIA PTY LIMITED



# Benefits at a glance

This comparison of systems clearly shows the highly efficient and environmentally friendly way in which our infrared heating systems work. Especially outdoors, the flexible range of applications and the comprehensive selection of accessories that our radiators offer, ensure comfortable and constant heating zones.

Emitter	Infrared halogen tube (1400 watts)	Gas heater (4000 watt)
Operating costs (per hour)	Approx \$0.30 (based on \$0.22/kwh)	Approx \$3.56 (based on \$32/9kg gas refill and consumption of 1kg gas/hr)
Efficiency	92% of the energy consumed will be used on direct heat radiation	Approx 40% of the energy consumed is used as direct heat radiation
Immediate heated effect	The warmth is felt immediately as soon as the switch is pressed 1 sec (90% capacity)	Requires a long warming-up phase 5 min. (90% capacity)
Energy/safety	The energy source is the socket. No safety concerns.	High potential for danger by using gas.
CO <sup>2</sup> emission	No direct CO <sup>2</sup> emission	Direct CO <sup>2</sup> emission.
Installation options	Can be mounted to walls, ceilings and structures flexibly positioned indoors and outdoors on a tripod.	Assembled on a floor stand, with positioning being restricted. Only outdoor use possible.
Wind sensitivity	No	Very high.



**SOLAMAGIC**  
AUSTRALIA PTY. LIMITED